

Assarted Enclosure

Areas within this Zone

'Catshaw Ancient Enclosures', 'Langsett Ancient Enclosures', 'Penistone Assarts', 'Ancient Enclosures Near Ingbirchworth', 'High Hoyland to Pilley Wooded Farmland', 'Darton Ancient Enclosures', 'Wortley Metal Workings Area', 'Wharncliffe Chase', 'Wombwell Woods', 'Darfield Assarts', 'Grimethorpe and Great Houghton Assarts'

Summary of Dominant Character

This zone is made up of ancient woodlands and ancient irregular enclosure patterns. The key characteristics of these enclosures are small, sinuous or rounded fields, with mainly hedged boundaries. Very little of the land was formerly part of a medieval open field system (see 'Strip Enclosure and 'Agglomerated Enclosure'). 62% of land within the zone is recorded by the project as former woodland and a further 953 Ha (14% of the zone) is still surviving ancient woodland likely to date back to the medieval period making the past landscape of the zone heavily wooded. Other parts of the zone will represent the piecemeal enclosure of commons and moors. Most enclosures date to the medieval or early post-medieval period.

The zone mostly lies across the lower and middle coal measures whose alternating bands of shales, sandstone and coal seams have weathered to produce a rolling hilly landscape with steeper scarps in the west of the zone and where the River Don cuts through the area. Areas of woodland have often survived on the steeper slopes.

Settlement in this zone is generally dispersed in character, with a significant distribution of medieval farm buildings recorded by the South Yorkshire Sites and Monument Record (SYAS 2008). In the valleys, settlement includes numerous water powered sites, some dating from the medieval period, others related to 18th and 19th century industries.

Relationship with Adjacent Zones

This zone forms a fairly cohesive block down the centre of the district with some 'Nucleated Rural Settlements' and areas of 'Strip Enclosure' interspersed with areas of 'Assarted Enclosure'. The older irregular field patterns tend to be associated with dispersed settlements; nucleated settlements are related to areas of former common field agriculture. This is not a completely clear cut pattern within South Yorkshire but it is a general trend.

The majority of the surviving deer parks and 18th century private parks are surrounded by this zone with areas of ancient woodland found within them. This relationship is in part due to the former wooded character of the area

as a link has been made between heavily wooded regions and high numbers of deer parks (Rackham 1986, 123).

Inherited Character

Placename evidence throughout this zone is indicative of a highly wooded past. Anglo-Saxon and early medieval names related to woodland and woodland clearance are common, these names may represent existing clearings renamed by Viking and Anglo-Saxon settlers rather than necessarily providing dating evidence for the clearance. What is clear is that large areas of former woodland had been removed by the time of the Domesday survey in 1086, by which point only 13% of the land was recorded as woodland (Jones 2000, 42-3).

The landscape that results from woodland clearance often contains botanically rich hedgerows. Within this zone there are likely examples within 'Langsett Ancient Enclosures', 'High Hoyland to Pilley Wooded Farmland' and 'Ancient Enclosures Near Ingbirchworth'. Another common feature of land assarted from woodland is the presence of shaws, belts of woodland running between fields. These may have provided timber and other woodland resources within an otherwise enclosed landscape (Muir 2000, 22-25).

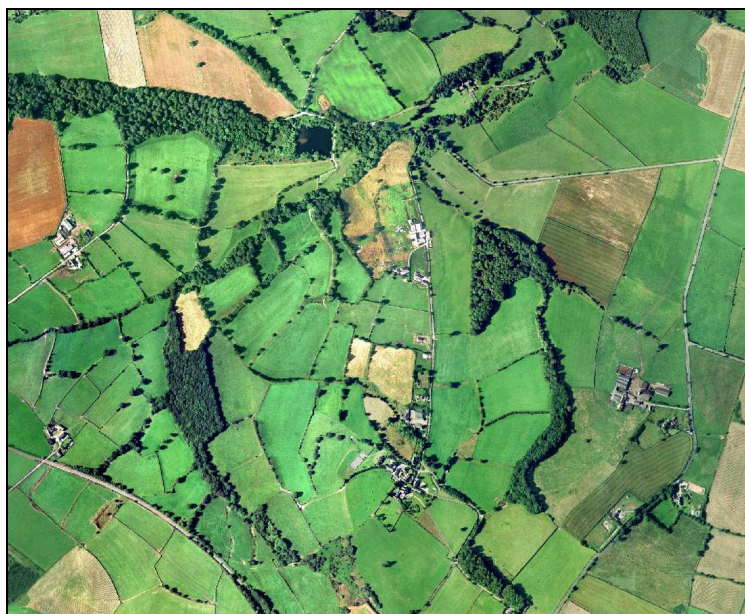


Figure 1: Shaws within the anciently enclosed fields north of Penistone. Cities Revealed aerial photography © the GeoInformation Group, 2002

Remnants of the ancient woodlands, from which much of this enclosed landscape was assarted, can be seen across this zone. These larger areas of woodland typically survive on steep slopes where land has been impractical to clear for agriculture. The survival of ancient woodland on marginal land is also evident when the woodland distribution is compared with historic parish boundaries; many of the woodlands are on the edge of the parish, sometimes straddling parish boundaries.

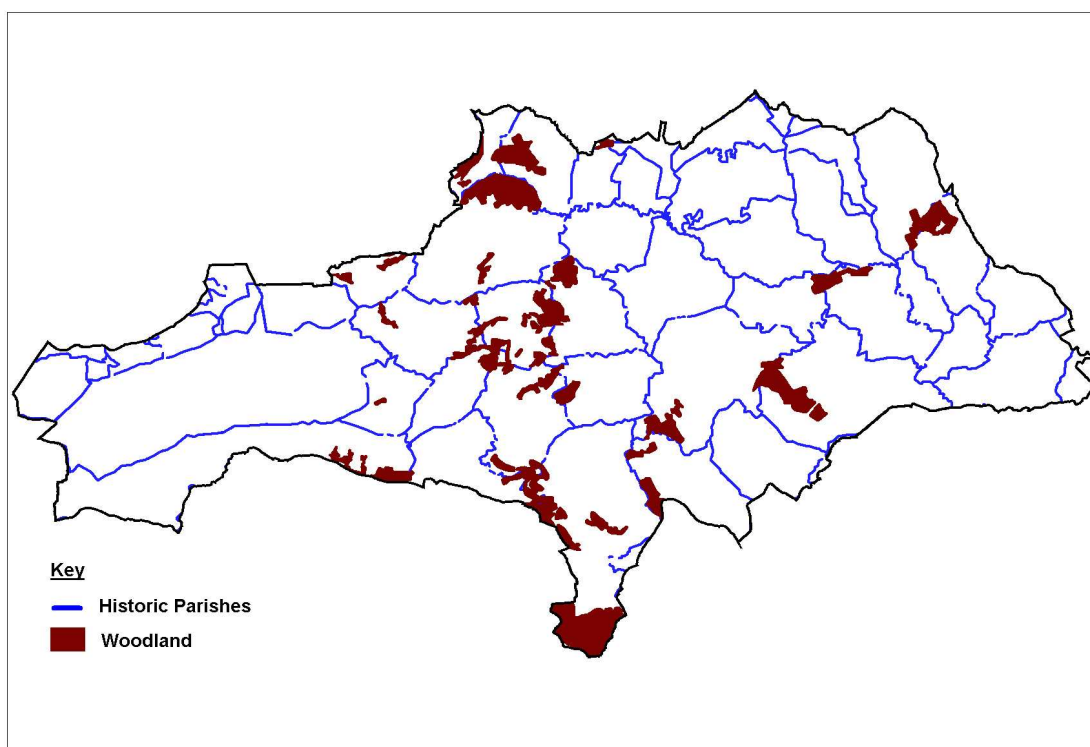


Figure 2: Map of Barnsley district showing areas of surviving woodland within the 'Assarted Enclosure' zone and their relationship with early 19th century parish boundaries. (Parish data from Kain and Oliver 2001)

Although much removed from the landscape, woodland was not an insignificant resource in the medieval and later periods. Woodland was an important source of timber, which was the major building material until the 17th century transition to stone (Hey 1979, 131). Woods and wooded pastures were also utilised for fuel production and grazing land from the medieval period onwards (Rackham 1986, 89,121).

The driving force for the expansion of settlement into wooded areas may have been increases in the population of the area in the early medieval period (Hey 1979, 72). These pressures will also have led to the occupation and irregular enclosure of areas of common such as those at 'Penistone Assarts' and 'Catshaw Ancient Enclosures'. At Catshaw a former moorland landscape is suggested by the absence of hedgerows.

The surviving woodlands often hold earthwork remains of prehistoric and Roman activity. There are good examples in 'Wombwell Woods' including a late Neolithic/ early Bronze Age hengiform monument and Iron Age/Romano-British enclosures (SYAS 2008). The Wharncliffe area is also rich in remains of Iron Age and Roman industries and earthwork remains of contemporary settlement and farming practices (ibid). This area juts into the Sheffield district and is closely related in character to the woodlands within Sheffield's 'Assarted Enclosure' zone, where a large Iron Age and Roman quern making site is located (Butcher 1957).

The landscape at ‘Wharncliffe Chase’ is one of further complexity. In 1252 a grant of free warren was given to the Wortley family, giving them the right to establish a hunting chase or deer park. The resultant chase stretched across a large area of the current parish of Wortley and took in lands from the hamlets of Whitley and Stanfield, which were “violently depopulated” (Hey 1979, 115). Traces of the medieval enclosure patterns associated with these settlements survive but most of the fields in the area are characteristic of assarted woodland. An enclosed deer park wasn’t defined until around 1590 (ibid); an earthwork boundary and ponds survive.

Later Characteristics

Rurally based industries have been a significant feature of this landscape since the early medieval assartment of the woodlands. The geology and topography of the zone provides fast flowing waterways, ideal for water-powered mills. This power was utilised by corn mills from the medieval period and was later harnessed for iron working.

There is evidence of medieval iron smelting at Wharncliffe and Cinder Hill near Cawthorne. This industry continued to develop throughout the zone because of the combination of rich iron stone deposits running through the region and woodland that could be used to produce charcoal for fuel. Documentary and placename evidence suggest that a number of the woods within this zone were utilised for coppicing; a woodland management technique often associated with fuel production. Woodlands also provide good survival of ironstone mining in the district. Further information on surviving iron working sites associated with the mining in this area can be found within the ‘Industrial’ zone.

Coal was another key industry in this area. As the coal seams are near to the surface in the west of the district they could be utilised from an early date, documentary evidence puts coal mining as far back as the medieval period. However, it wasn’t until between 1550 and 1700 that the industry expanded (Hill 2001, 54). These early mines were shallow, relatively small scale, short-lived operations because there were few transport links beyond local markets. These mines have left few traces on the landscape and many do not survive long enough to be marked on the 1850s Ordnance Survey maps. This style of mining continued into the early 19th century but the coming of railways in the mid 19th and 20th century and the building of the canal at Worsbrough facilitated greater expansion. The railways associated with the early coal mines have left their mark on the landscape even where they have since been dismantled with their smooth curving path cutting through earlier enclosures.

A more recent influence of transport on this landscape comes in the form of the M1 motorway and other major roads. These can be highly disruptive to field patterns although the curving road layout has more in common with

the sinuous field boundaries of this zone compared with the areas of 'Surveyed Enclosure'.

There has not been significant boundary loss within the zone but boundary degradation through lack of maintenance and reliance on fences has become a problem since the late 20th century (Barnsley Metropolitan Borough Council 2002, 33-4). Management practices are under development to halt this degradation and also to encourage replanting of oak woodland where ancient woodlands have been subject to large amounts of conifer plantation from the 1950s (ibid, 25-6).

Bibliography

Barnsley Metropolitan Borough Council

- 2002 *Barnsley Biodiversity Action Plan*. Barnsley Metropolitan Borough Council.
- Butcher, L.H. 1957 Archaeological Remains on the Wharnccliffe-Greno Upland, South Yorkshire. *The Hunter Archaeological Society*, 7, 38-39.
- Gray, G.D.B. 1976 The South Yorkshire Coalfield. In: J. Benson and R.G. Neville (eds.), *Studies in the Yorkshire Coal Industry*. Manchester University Press, 31-44.
- Hey, D. 1979 *The Making of South Yorkshire*. Ashbourne: Moorland Publishing.
- Hill, A. 2001 *The South Yorkshire Coalfield: a History and Development*. Stroud: Tempus Publishing.
- Jones, M. 2000 *The Making of the South Yorkshire Landscape*. Barnsley: Wharnccliffe Books.
- Kain, R.J.P. and Oliver, R.R. 2001 *Historic Parishes of England and Wales: an Electronic Map of Boundaries before 1850 with a Gazetteer and Metadata* [computer file]. Colchester, Essex: History Data Service, UK Data Archive [distributor], 17 May 2001. SN: 4348.
- Muir, R. 2000 *The New Reading the Landscape*. University of Exeter Press.
- Rackham, O. 1986 *The History of the Countryside*. London: J.M. Dent.
- SYAS 2008 *South Yorkshire Sites and Monument Record* [dynamic MS Access - GIS database] Sheffield: South Yorkshire Archaeology Service. Available by appointment with SYAS, Howden House, 1 Union Street, Sheffield, S1 2SH. Email: syorks.archservice@sheffield.gov.uk [accessed 26/02/08].